



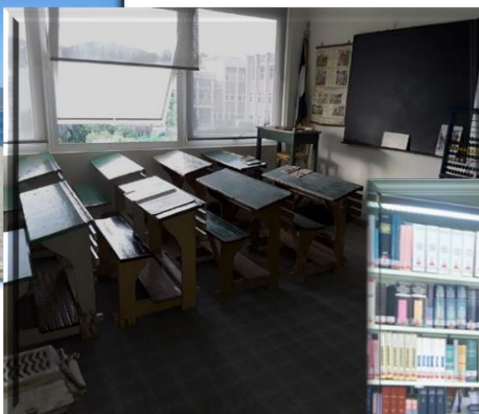
**DEPARTMENT OF EDUCATIONAL SCIENCES AND SOCIAL
WORK**

SCHOOL OF HUMANITIES AND SOCIAL SCIENCES

UNIVERSITY OF PATRAS

STUDIES GUIDE

ACADEMIC YEAR 2021-2022



PATRAS, OCTOBER 2021

© 2021

Department of Educational Sciences and Social Work, University of Patras

This Study Guide to the academic year 2021-2022 is the result of the collective work of the members of Department of Educational Sciences and Social Work.



INDEX

	Pg.
INTRODUCTION	4
1 UNIVERSITY OF PATRAS	5
2 SCHOOL OF HUMANITIES AND SOCIAL SCIENCES	7
3 DEPARTMENT OF EDUCATIONAL SCIENCES AND SOCIAL WORK	8
3.1 ADMINISTRATION	9
3. 2 TECHING STAFF	10
3.3 THE MUSEUM OF EDUCATION	12
3.4 ERASMUS+ PROGRAM	14
3.5 COURSES OUTLINE	15

INTRODUCTION

The STUDY GUIDE of the Department of Educational Sciences and Social Work of the School of Humanities and Social Sciences of the University of Patras aims to inform students about issues related to the Department and the studies. It contains brief information about the Institution, the School and the Department. Regarding the Department, it contains information about the Administration, the specializations, the Teaching and Research Staff (D.E.P.), the Special Teaching Staff (E.E.P.), the Laboratory Teaching Staff (E.D.I.P.), the Special Technical Laboratory Staff (E.T.E.P.) and its administrative staff. Finally, it includes information about the content of the courses offered.

Website of the Department:

<http://www.edu-sw.upatras.gr> 

Secretariat e-mail:

secptde@upatras.gr

1. UNIVERSITY OF PATRAS

The University of Patras (www.upatras.gr) was founded on 11 November 1964 as a self-governed Legal Entity of Public Law under the supervision of the Greek Government. The administrative bodies of the institution in accordance with the provisions of article 15 of Law 4485/4.8.2017 (A' 114) are the Senate, the Rectors' Council, the Rectors and the Vice Rectors.

Rector and Vice Rectors (2020-):

- Rector: Christos I. Bouras, Professor, Department of Computers Engineering and Informatics
- Vice Rector for Academic and International Affairs: Dionissios Manzavinos, Professor, Department of Chemical Engineering
- Vice Rector for Research and Development: Panagiotis Dimopoulos, Professor, Department of Biology
- Vice Rector for Finance and Planning: Dimitrios Skuras, Professor, Department of Economics
- Vice Rector for Students Affairs: Markos Marangos, Professor, Department of Medicine

The University comprises seven Schools, each of which covers a group of related sciences. Each School is divided into Departments and each Department covers a single discipline or a group of disciplines. Each Department's Curriculum leads to a single degree.

The administrative bodies of the School are the Dean, the Deanship and its General Assembly. The Deanship of the School consists of the Dean, the Heads of Departments and some representatives of the Special Teaching Staff (E.E.P.), the Laboratory Teaching Staff (E.D.I.P.) and the Special Technical Laboratory Staff (E.T.E.P.) members. The administrative bodies of the Department are the Head of the Department, the General Assembly and the Administrative Council.

Some Departments of the University of Patras are divided into Sectors. The Sector moderates the teaching of a module of the Department's subject area, which corresponds to a specific scientific field. The bodies of the Sector are its Director and its General

Assembly. The Sectors or the Departments include Laboratories, the function of which is based on an internal regulation.

2. SCHOOL OF HUMANITIES AND SOCIAL WORK

- Dean (2020-): Vassilios Komis, Professor, Department of Educational Sciences and Early Childhood Education.

- Secretariat: Nikolaos Koutsaggelos

Phone.: +30 2610–969604, e-mail: hssdean@upatras.gr

3. DEPARTMENT OF EDUCATIONAL SCIENCES AND SOCIAL WORK

The **Department of Educational Sciences and Social Work** was created by the renaming of the Department of Primary Education following its synergy with the Department of Social Work of Higher Technological Educational Institute (A.T.E.I.) of Western Greece, according to the provisions of Law 4610/2019 (Article 36, §2, paragraph 2.aa). It admitted students for the first time during the academic year 2019-20.

The admitted students have the right to choose a specialization within the Department, according to the Curriculum and the Regulations of the Department. The Curriculum provides two specializations, which result in a single degree:

A. The specialization of *Primary Education Teachers*

and

B. The specialization of *Social Work*.

The professional rights of the graduates of the two specializations are distinct and guaranteed.

The first two semesters (1st year of study) students attend compulsory and elective courses common to both specializations, whereas from the third semester onwards each specialization has its own Study Guide. However, it is possible to choose a specific number of elective courses from the other specialization.

Students of both specializations complete a systematic Practical Training. Students attending the first specialization complete their Practical Training in Primary Schools and students attending the second specialization in Social Services correspondingly. It is noted that the Practical Training of the specialization of Social Work ("Supervision I and II"), except for the 6-hour weekly course in the Department, also includes 26 hours of Practical Training per week in Social Services selected by the Department. The 6-hour lesson is included in the 32 hours.

The studies in the Department of Educational Sciences and Social Work last four years (eight semesters) and the graduates are awarded with 240 ECTS credits.

3.1 ADMINISTRATION

The **Department of Educational Sciences and Social Work** (former Department of Primary Education) commenced operations in October 1986.

Chair: Professor Yorgos Nikolaou
gnikolaou@upatras.gr, phone: +30 2610-969716

Vice Chair: Professor Christos Panagiotakopoulos
cpanag@upatras.gr, phone: +30 2610-969707

Administrative officer, Secretary: Manolis Apostolakis
apostolm@upatras.gr, phone: +30 2610-969704

Administrative staff:

Olga Karvouniari (undergraduate studies)	Phone: +30 2610-969705
Fotini Bramou (undergraduate, postgraduate studies)	Phone: +30 2610-969702
Niki Polychronopoulou (postgraduate studies)	Phone: +30 2610-969703
Eleni Patroni (undergraduate, postgraduate studies)	Phone: +30 2610-969701
Anny Tsatsouli (undergraduate, postgraduate studies)	Phone: +30 2610-969700

Email: secptde@upatras.gr (undergraduate), pmsptde@upatras.gr (postgraduate)

Postal Address:

University of Patras
Department of Educational Sciences and Social Work
Archimedes str., Building 7
Rion 26504, Patra, Greece.

3.2 TEACHING STAFF

Faculty

N/A	FULL NAME	GRADE	PHONE NUMBER	E-mail
1	Fterniati Anna	Professor	+30 2610-969723	afterniati@upatras.gr
2	Kamarianos Ioannis	Professor	+30 2610-997683	kamarian@upatras.gr
3	Koleza Evgenia	Professor	+30 2610-969738	ekoleza@upatras.gr
4	Nikolaou Georgios	Professor	+30 2610-969716	gnikolaou@upatras.gr
5	Panagiotakopoulos Christos	Professor	+30 2610-997907	cpanag@upatras.gr
6	Stamelos Georgios	Professor	+30 2610-969729	stamelos@upatras.gr
7	Vassilopoulos Stephanos	Professor	+30 2610-969726	stephanosv@upatras.gr
8	Asimaki Anna	Associate Professor	+30 2610-997380	asimaki@upatras.gr
9	Dimitrakopoulos Ioannis	Associate Professor	+30 2610-969776	jdimitrako@upatras.gr
10	Antzakas Klimis	Assistant Professor	+30 2610-969712	k.antzakas@upatras.gr
11	Diakogiorgi Kleopatra	Assistant Professor	+30 2610-969746	kdiakogiorgi@upatras.gr
12	Dimakos Ioannis	Assistant Professor	+30 2610-969740	idimakos@upatras.gr
13	Dritsas Ioannis	Assistant Professor	+30 2610 969720	dritsasioan@upatras.gr
14	Kavasakalis Aggelos	Assistant Professor	-	agkav@upatras.gr
15	Lampropoulos Charilaos	Assistant Professor	+30 2610-969732	hlabro@upatras.gr
16	Mentis Emmanouel	Assistant Professor	+30 2610-369154	ementis@upatras.gr
17	Niftanidou Theharoula	Assistant Professor	+30 2610-969741	niftanid@upatras.gr
18	Panagiotopoulou Petroula	Assistant Professor	+30 2610-969739	ppanag@upatras.gr
19	Tsihouridis Charilaos	Assistant Professor	+30 2610-969784	hatsihour@upatras.gr
20	Farmakopoulou Ignatia	Assistant Professor	-	ifarmakop@upatras.gr
21	Tsesmeli Styliani	Lecturer	+30 2610-969736	stsesmeli@upatras.gr
22	Valsami Ourania-Pagona	Lecturer	+30 2610 969720	valsami@upatras.gr

Special Educational Staff

	Name	Division - subject	Phone	E-mail
1	Galani Mary	Natural and Theoretical Sciences and Didactics - Didactics of dance, rhythmic and theatrical play	+30 2610-969750	M.Galani@upatras.gr
2	Vikatou Evgenia	Social and Educational Theory and Analysis – Musical Education	+30 2610-969727	E.Vikatou@upatras.gr

Laboratory Teaching Staff

	Name	Division	Phone	E-mail
1	Adamopoulou Anthi	Social and Educational Theory and Analysis	+30 2610-969727	anadam@upatras. gr
2	Armakolas Stefanos	Natural and Theoretical Sciences and Didactics	+30 2610-969734	stefarmak@upatras.gr
13	Frounta Maria	Social and Educational Theory and Analysis	+30 2610 969723	mariafggm@upatras.gr
5	Karatrantou Anthi	Natural and Theoretical Sciences and Didactics	+30 2610-969712	akarat@upatras.gr
	Konidari Vicktoria	Social and Educational Theory and Analysis	+30 2610 969781	vickonidari@upatras.gr
7	Konstantopoulou Georgia	Psychology, Counseling and Social Services	+30 2610-969722	gkonstantop@upatras.gr
	Lampropoulou Niki	Natural and Theoretical Sciences and Didactics	+30 2610-969713	nikilampro@upatras.gr
9	Manesis Nikolaos	Natural and Theoretical Sciences and Didactics	+30 2610-969717	nmanesis@upatras.gr
10	Mavrogianni Theoni	Natural and Theoretical Sciences and Didactics	+30 2610-997594	theomavr@upatras.gr
11	Pitsou Chariklia	Social and Educational Theory and Analysis	+30 2610-969721	xpitsou@gmail.com
12	Sarris Menelaos	Psychology, Counseling and Social Services	+30 2610-969725	m.sarris@upatras.gr
43	Theodoropoulou Maria	Natural and Theoretical Sciences and Didactics	+30 2610-969719	mtheodo@upatras.gr
3	Zaxaropoulou Souzana	Natural and Theoretical Sciences and Didactics	-	souzahar@upatras.gr

Special Laboratorial Technical Staff

	Name	Phone	E-mail
1	Zafiratos Panagiotis	+30 2610-969737	P. H. Zafeiratos@upatras. gr
2	Panagiotopoulou Vasiliki	+30 2610-969749	panavasi@upatras.gr
3	Tsene Lili	+30 2610-969782	tsene@upatras.gr

3.3 THE MUSEUM OF EDUCATION

The Museum of Education is an academic unit established with Government Gazette 4440 / 08.10.2019. It is administered by a professor of the Department, who is elected by the General Assembly, in accordance with the provisions for the election of laboratory directors, among the professors who have a renowned scientific, organizational, educational or social work on the issues of the Museum. The mission of the Museum is:

- The collection, classification, rescue and highlighting of evidence from the history of Modern Greek and International Education (maps, desks, textbooks, curricula, photographs, teaching aids, speeches, circulars, decrees, laws, minutes, etc.) .
- The support of scientific research and the transmission of academically cultivated knowledge to the university community and the wider society.
- The research and study of the educational school past and its connection with the current Greek and international educational reality.
- The internship (practicum) of students and especially of the relevant pre- and postgraduate courses (Modern History, History of Education, Comparative Pedagogy, Sociology of Education, Educational Policy).
- The guided tour of students of Primary and Secondary Education
- The organization of Museum Pedagogy programs and seminars
- The organization and realization of training seminars for teachers in Museum Pedagogy.
- The support of postgraduate programs in History of Education and Museum Pedagogy and finally,
- The enhancement of the extroversion of the Pedagogical Department of Educational Sciences and Social Work and the University of Patras in general.

For the fulfillment of its purposes the Museum:

- Creates didactic and research collections of objects and relevant supervisory and educational material from Greece and abroad, which it maintains in exhibition spaces or specially designed storage areas.
- Accepts by permanent or temporary borrowing items from other collections which will be exhibited on its premises.

- Collaborates with affiliated organizations in Greece and abroad.
- Creates and develops activities for the maintenance and utilization of its material.
- Organizes periodic exhibitions on topics related to Education and educational institutions independently but also in collaboration with affiliated organizations.
- Organizes training programs aimed at both young people and the general population.
- Conducts scientific museological research, related to Education and the History of Education.
- It has its permanent and periodic exhibition spaces for visits of schools and of the public.
- Organizes lectures, screenings, exhibitions, educational and research programs and other events that are considered to help spread knowledge and love for the arts, history and sciences.
- Creates an Association of Friends of the Museum, which support the activities and programs of the Museum and actively participate in its events.

The collections of the Museum of Education of Patras University are organized and classified according to thematic areas in the fields of Education.

The primary obligation of the Museum is the maintenance of the good condition of its Permanent Collections and the provision of appropriate conditions for the storage, utilization and exhibition of the objects of the collections.

Records, photographs and other documentation material are compiled for the permanent collections at the Education Museum of Patras University. The documentation concerns the conventional and digitized process of collection, organization, storage and distribution of information material.

The Education Museum of Patras University is housed in a specially designed area of the University facilities that has been granted for this purpose and in general in areas managed by Patras University.

The responsibility for the custody and maintenance of the Museum's objects lies with the institutionalized competent bodies of Patras University. The Museum can lend for a certain period objects from its collections to other similar institutions with a suggestion of its management and after a decision of the Senate of Patras University.

Currently, Director of the Museum of Education is Professor Anna Fterniati.

3.4 THE ERASMUS+ PROGRAM

The University of Patras (UPatras) regularly welcomes Erasmus+ exchange students each year and has many Erasmus agreements with Universities throughout Europe in the areas of Education and Social Work.

The Department of Educational Sciences and Social Work was established in April 2019 following the merger of the Department of Educational Sciences and Social Work of the University of Patras and the Department of Social Work of the Technological Education Institute of Western Greece. The new Department offers a rich curriculum with two distinct tracks: Elementary Education and Social Work.

To take part in the Erasmus+ Program at UPatras, you need to first contact the Departmental Erasmus coordinator at your home institution to express your interest. You can only study under the Erasmus+ Program if your home University has an Erasmus agreement in place with us.

The Erasmus+ program aims at enhancing the quality and reinforcing the European dimension of higher education as well as at increasing student and staff mobility. It enriches students' lives not only in the academic field, but also in the acquisition of intercultural skills and self-reliance. Staff exchanges are also of significant benefit, both for the individuals participating and for the institutions involved.

The Department of Educational Sciences and Social Work Erasmus Coordinators:

Dr. Ioannis Dimakos, idimakos@upatras.gr

Dr. George Stamelos, stamelos@upatras.gr

Dr. Klimis Antzakas

Dr. Ioannis Dritsas

Dr. Ignatia Farmakopoulou

Dr. Maria Theodoropoulou

Ms. Evgenia Vikatou

3.5 COURSES OUTLINE

The outlines of the courses offered are available in pdf format at the following link for each year of study and specialization:

<https://www.edu-sw.upatras.gr/en/courses-outline/>

